



CD International products are designed to help you perform your job more efficiently, effectively and safely. You have over 80 sizes of twelve styles of balancing correction weights to choose from. We also carry balancing accessory products to complete any balancing tool kit. With over five million weights in stock, we are ready to meet your immediate requirements with same day shipping. C D International is your one source for all of your balancing correction weight needs.

## **BALANCING CORRECTION WEIGHT KITS**

These weight kits are made up of an assortment of our different styles of balancing correction weights to give you a range of the products we have available. Each style of weight is described in detail in following sections of this price guide and replacement packages are available to restock as needed.



KIT #	CONTAINS:		
	PART #	DESCRIPTION	PRICE
<b>BASK</b> Balancing Accessories Starter Kit	<b>CC-10</b>	Adjustable carry case	\$525.00
	<b>SC-Clips</b>	Squirrel Cage Clips 275 pcs/25 ea. 0.2-13.0 g	
	<b>SC-KIT</b>	Steel C-clamps (pg. 2)	
	<b>AFC-KIT</b>	Airfoil Clips (pg. 4) including Extra Wide sizes .25, .50, 1.0 oz.	
<b>BK-PRO</b> Balancing Kit Pro	Complete <b>BASK Plus</b> <b>RIC-Clips</b> (pg. 3)	<b>BASK AND</b> 180 piece set of Backward Incline Clips 25 ea. of 0.5-14.0 g wts./ 10 ea. of 28.0 – 56.0 g wts.	\$670.00

## **SQUIRREL CAGE BALANCING CLIPS**

The squirrel cage clips have a slight curve and are designed for balancing fans with a curved blade.

<b>Pre-packaged Sets</b>		
Part #	Description	Price
FS-BC-100	Full Set; 1100 pcs. 100 ea. wt.0.2-13.0 grams	320.00
CC-10	Deluxe Adjustable Carry Case	48.00



<b>Replacement Packages</b>					
Part #	Description	Price	Part #	Description	Price
Per 100 clips			Per 25 clips		
1BC-02	100 X 0.2 g	27.00	2BC-02	25 X 0.2 g	11.00
1BC-04	100 X 0.4 g	27.00	2BC-04	25 X 0.4 g	11.00
1BC-06	100 X 0.6 g	27.00	2BC-06	25 X 0.6 g	11.00
1BC-08	100 X 0.8 g	27.00	2BC-08	25 X 0.8 g	11.00
1BC-16	100 X 1.6 g	27.00	2BC-16	25 X 1.6 g	11.00
1BC-24	100 X 2.4 g	32.00	2BC-24	25 X 2.4 g	13.50
1BC-33	100 X 3.3 g	32.00	2BC-33	25 X 3.3 g	13.50
1BC-49	100 X 4.9 g	37.00	2BC-49	25 X 4.9 g	16.00
1BC-65	100 X 6.5 g	37.00	2BC-65	25 X 6.5 g	16.00
1BC-98	100 X 9.8 g	52.00	2BC-98	25 X 9.8 g	21.00
1BC-130	100 X 13.0 g	57.00	2BC-130	25 X 13.0 g	23.00

### **CONTENTS**

Balancing Weight Kits	Page 1
Squirrel Cage Clips	Page 1
Backward Incline Clips	Page 2
Steel C-Clamps	Page 3
Air Foil Clips	Page 4
Accessories	Page 5,6,7
Stainless Steel Shims	Page 8

### **TERMS AND CONDITIONS**

1. F.O.B. Clarence, New York
2. FIRM NET 30
3. 25% Restocking Fee
4. We gladly accept:

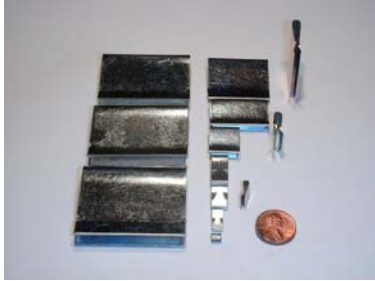
**Master Card VISA American Express**

Revised June 2006

## BACKWARD INCLINE BALANCING CLIPS

These clips are flat in shape and are designed for balancing flat bladed fans such as most backward incline fans.

Pre-packaged Sets		
Part #	Description	Price
FS-RIC-100	Full Set; 900 pcs 100 ea. wt. 0.5-56.0 grams	545.00
CC-10	Deluxe Adjustable Carry Case	48.00



### Replacement Packages

Part #	Description	Price Per 100	Part #	Description	Price Per 25
1RIC-01	100 x 0.1 g	27.00	2RIC-01	25 X 0.1 g	11.00
1RIC-025	100 x 0.25g	27.00	2RIC-025	25 x 0.25g	11.00
1RIC-05	100 x 0.5 g	27.00	2RIC-05	25 X 0.5 g	11.00
1RIC-08	100 x 0.8 g	27.00	2RIC-08	25 X 0.8 g	11.00
1RIC-18	100 x 1.8 g	27.00	2RIC-18	25 X 1.8 g	11.00
1RIC-36	100 x 3.6 g	32.00	2RIC-36	25 X 3.6 g	13.50
1RIC-50	100 x 5.0 g	35.00	2RIC-50	25 x 5.0 g	14.50
1RIC-70	100 x 7.0 g	37.00	2RIC-70	25 X 7.0 g	16.00
1RIC-140	100 x 14.0 g	57.00	2RIC-140	25 X 14.0 g	23.00
1RIC-280	100 x 28.0 g	100.00	2RIC-280	25 X 28.0 g	41.00
1RIC-420	100 x 42.0 g	145.00	2RIC-420	25 X 42.0 g	59.00
1RIC-560	100 x 56.0 g	180.00	2RIC-560	25 X 56.0 g	76.00

## BLACK ZINC COATED BACKWARD INCLINE BALANCING CLIPS

These are backward incline clips coated in black zinc over spring steel.



### Replacement Packages

Part #	Description	Price Per 100	Part #	Description	Price Per 25
1RIC-B-05	100 x 0.5 g	27.00	2RIC-B-05	25 X 0.5 g	11.00
1RIC-B-08	100 x 0.8 g	27.00	2RIC-B-08	25 X 0.8 g	11.00
1RIC-B-18	100 x 1.8 g	27.00	2RIC-B-18	25 X 1.8 g	11.00
1RIC-B-36	100 x 3.6 g	32.00	2RIC-B-36	25 X 3.6 g	13.50

## STAINLESS STEEL BACKWARD INCLINE CLIPS

Clips are made of 410 stainless steel and are packaged in quantities of 25 clips.



Part #	Description (per 25)	Price
ST-RIC-05	0.5 g stainless clips	15.00 per pack
ST-RIC-09	0.9 g stainless clips	15.00 per pack
ST-RIC-18	1.8 g stainless clips	19.00 per pack
ST-RIC-39	3.9 g stainless clips	20.00 per pack
ST-RIC-70	7.0 g stainless clips	20.00 per pack
ST-RIC-140	14.0 g stainless clips	27.00 per pack

## CUSTOM METAL STAMPINGS & BALANCING CLIPS

**NEW!**



C D International, Inc. now offers custom metal stampings to our customers. These products reflect the commitment to quality you have experienced in our other products. Call today for a quote.

We also strive to meet all of your balancing correction weight needs. Please give us a call if you have specific design requirements. We may have a weight in stock to meet your custom requirements, or have a die available to manufacture them for you. If we don't have a die for your specific design, we can discuss fabricating one.



## STEEL BALANCING C-CLAMPS

The Steel Balancing C-Clamps are used as permanent correction weights on vane axial flow fans and squirrel cage fans. They have a serrated surface opposite the set screws that acts like a second set screw.

Pre-packaged Set		
SC-KIT	Complete Set – 28 pieces; 2 ea. clamp .04 – 8.0 ounce. Includes complete set of wrenches-one for each sized clamp	185.00



Replacement set screws available at \$1.00/ screw

Replacement Weights – priced individually			
Part #	Throat size	Description	Price
AC-004	3/16"	1 X .04 ounce	7.05
AC-01	5/16"	1 X .10 ounce	7.05
SC-25	5/16"	1 X .25 ounce	7.05
SC-50	5/16"	1 X .50 ounce	7.25
SC-75	5/16"	1 X .75 ounce	7.25
SC-1	7/16"	1 X 1.0 ounce	7.25
SC-150	7/16"	1 X 1.5 ounce	7.25
SC-2	5/8"	1 X 2.0 ounce	8.25
SC-3	5/8"	1 X 3.0 ounce	8.25
SC-4	5/8"	1 X 4.0 ounce	8.25
SC-5	3/4"	1 X 5.0 ounce	9.25
SC-6	3/4"	1 X 6.0 ounce	9.25
SC-7	3/4"	1 X 7.0 ounce	9.25
SC-8	3/4"	1 X 8.0 ounce	9.25

## STAINLESS STEEL BALANCING C-CLAMPS

The Stainless Steel C-Clamps are made from 303 stainless steel and are used as permanent correction weights on vane axial flow fans and squirrel cage fans.



Part #	Throat size	Description	Price
STSC-125	3/16"	1 X .125 ounce	14.00
STSC-25	5/16"	1 X .25 ounce	14.00
STSC-50	5/16"	1 X .50 ounce	14.00
STSC-75	5/16"	1 X .75 ounce	14.00
STSC-1	5/16"	1 X 1.0 ounce	14.00
STSC-2	5/8"	1 X 2.0 ounce	16.00
STSC-3	5/8"	1 X 3.0 ounce	16.00
STSC-4	5/8"	1 X 4.0 ounce	16.00
STSC-5	3/4"	1 X 5.0 ounce	18.00
STSC-6	3/4"	1 X 6.0 ounce	18.00
STSC-8	3/4"	1 X 8.0 ounce	18.00

## HARSH ENVIRONMENT BALANCING C-CLAMPS

These clamps have set screws on both sides making them ideal for use in environments where fan blades may be corroded or other wise difficult to secure a weight to. One side is tightened until the fan blade is locked in between the set screw points and the serrated surface on the other side. The second set of screws is then tightened to further secure the weight.



Part #	Throat size	Description	Price
DSS-SC-2	5/8"	1 X 2.0 ounce	10.95
DSS-SC-3	5/8"	1 X 3.0 ounce	10.95
DSS-SC-4	5/8"	1 X 4.0 ounce	10.95
DSS-SC-5	3/4"	1 X 5.0 ounce	11.95
DSS-SC-6	3/4"	1 X 6.0 ounce	11.95
DSS-SC-7	3/4"	1 X 7.0 ounce	11.95
DSS-SC-8	3/4"	1 X 8.0 ounce	11.95

## AIR FOIL BALANCING CLIPS

Air foil clips are used on blowers manufactured by companies such as Trane, Carrier, Twin City, New York and Chicago Blower. They have a 3/4" opening or throat size. The average depth of the clip is 1.1 inch.



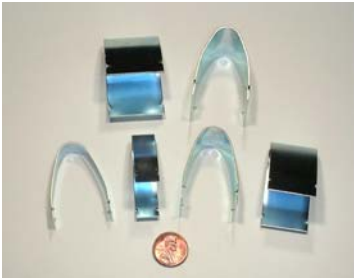
### Pre-packaged Set

AFC-KIT	Complete set; 60 pieces; 10 ea. Wt.	99.00
---------	--	-------

### Replacement packages – 10 clips per Pkg.

Part #	Description	Price
AFC-125	10 X .125 ounce clips	11.00
AFC-25	10 X .25 ounce clips	11.00
AFC-50	10 X .50 ounce clips	13.50
AFC-100	10 X 1.0 ounce clips	23.50
AFC-150	10 X 1.5 ounce clips	30.50
AFC-200	10 X 2.0 ounce clips	36.00

## EXTRA WIDE THROAT AIR FOIL BALANCING CLIPS



These clips have a 1.1 inch throat size. The depth averages 1.2 inches.

Part #	Description	Price
XW-AFC-25	10 X .25 ounce clips	18.00
XW-AFC-50	10 X .50 ounce clips	19.00
XW-AFC-100	10 X 1.0 ounce clips	26.00

## NARROW THROAT AIR FOIL BALANCING CLIPS

The narrow throat air foil clips have an average throat size of .54". The depth of the clip averages .9".

Part #	Description	Price
N-AFC-125	10 X .125 ounce clips	12.00
N-AFC-25	10 X .25 ounce clips	12.00
N-AFC-50	10 X .50 ounce clips	15.00
N-AFC-100	10 X 1.0 ounce clips	25.00
N-AFC-150	10 X 1.5 ounce clips	32.00
N-AFC-200	10 X 2.0 ounce clips	37.00

## TEFLON COATED AIR FOIL CLIPS

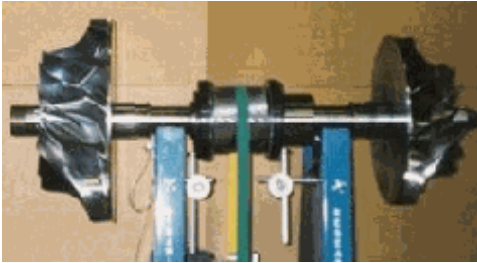
Air foil clips are coated with Teflon for chemical resistance.

Part #	Description	Price
T-XW-AFC-25	10 X .25 oz. clips	28.00
T-XW-AFC-50	10 X .50 oz. clips	29.50
T-XW-AFC-100	10 X 1.0 oz. clips	36.00

Part #	Description	Price
T-AFC-125	10 X .125 oz. clips	20.00
T-AFC-25	10 X .25 oz. clips	20.00
T-AFC-50	10 X .50 oz. clips	22.50
T-AFC-100	10 X 1.0 oz. clips	32.50
T-AFC-150	10 X 1.5 oz. clips	39.50
T-AFC-200	10 X 2.0 oz. clips	45.00

## BALANCING MACHINE DRIVE BELTS

To order, simply provide us with the belt length (circumference) and width in inches. Please allow up to two weeks for shipment.



Belt Width	Price/Inch (Length)
Up to 1 inch	0.65/inch
Up to 2 inches	0.95/inch
Up to 3 inches	1.35/inch

The flex-proof seamless joining system creates a belt that is free of thickening and hardening. This has a favorable effect on the running behavior of the belt and reduces noise level. C D International balancing machine belts are designed for low noise, high efficiency, and energy saving power transmission independent of pulley diameter.

## ADHESIVE BACKED LEAD WEIGHTS FOR BALANCING SHEAVES

These adhesive weights come in strips of blocks that can be broken apart to achieve the final correction weight. Each block is stamped with its weight. Sheaves should be balanced to compensate for the sloppy run out tolerance allowed by most manufactures. In some cases an inaccessible fan can be balanced on the sheave.

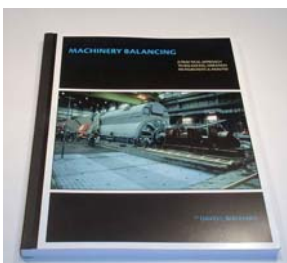


Part #	Description	Price
AW-60	One strip of 4 X 10 g blocks interspersed with 4 X 5 gram blocks totalling 60 grams	10.00
AW-84	One strip 7 gram blocks totalling 84 grams	10.00
AW-84T	One strip of 12 X 7 gram <u>thin</u> blocks totalling 84 grams. For tighter radius.	10.00
AW-168	One strip of 12 X 14 gram blocks totalling 168 grams.	10.00

## MATERIALS

Part #	Description	Price
<b>GBRT</b>	<b>Glass Bead Reflective Tape</b> – ½ inch wide by 5 ft. long	18.00
<b>BC</b>	<b>Balancing Clay</b> – 1 pound package. Ideal for trial weight use, cleaner than wax.	10.00
<b>BW</b>	<b>Balancing Wax</b> —1 pound slab. Ideal as trial weight, adheres very well.	15.00
<b>EPO</b>	<b>EPO Dynaweight</b> – A non-conductive, two-part epoxy balancing compound. 2 lb. kit.	31.90

## LITERATURE



### Part # MB-MAN

**\$125.00**

154 Pages. One of the best books written exclusively on balancing rotating machinery.

The **Machinery Balancing Manual** has been prepared by individuals with a combined total of over 90 years experience in dynamic balancing and vibration analysis. In addition to the practical knowledge gained over the years, they have also authored ASME and other papers, served on the ANSI Standards committees on dynamic balancing and taught many training seminars on the subject.

**BALLDRIVER L-WRENCHES**

These wrenches are made from Protanium to withstand high torque and wear. The full set (Part # HW-BDS) contains eight sizes. The four most popular wrenches are listed and sold separately.

Part #	Description	Price
HW-BDS	Balldriver L-Wrench Set; all 8 sizes .050, 1/16, 5/64, 3/32, 7/64, 1/8, 9/64, 5/32	10.00
HW-1/16	One Balldriver L-Wrench Fits AC-004 through SC-25	1.00
HW-5/64	One Balldriver L-Wrench Fits SC-50 through SC-75	1.00
HW-3/32	One Balldriver L-Wrench Fits SC-1 and SC-150	1.00
HW-1/8	One Balldriver L-Wrench Fits SC-2 through SC-8	1.00

**FELTIP PAINT MARKERS—REFLECTIVE PAINT MARKER**

**Feltip Paint Markers** - Paint markers are used to mark your stinger or magnet locations to ensure measurements are taken at the same place each time. Also great for marking oil analysis, infrared and process parameter routes. Color code routes schedules. Use them to mark tools and machinery parts in dirty or oily environments.

Part #	Description	Price
FPM-S	Feltip Paint Marker - Silver	15.00
FPM-B	Feltip Paint Marker - Blue	15.00
FPM-G	Feltip Paint Marker - Green	15.00
FPM-O	Feltip Paint Marker - Orange	15.00
FPM-R	Feltip Paint Marker - Red	15.00
FPM-Y	Feltip Paint Marker - Yellow	15.00

**Coming Soon**

**Reflective Paint** - silver paint used instead of glass bead reflective tape for more permanent marking when balancing or performing phase analysis with a [Laser Tach](#) or [Stroboscope](#)

**BALANCING GENIUS HAND HELD COMPUTER****About Correction**

- Weight removal calculations for grinding or drilling
- Bar stock calculations for weight addition by welding

**And Also About**

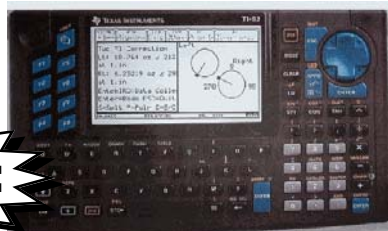
- Splitting and adding correction weights with graphics
- Set radii for single and two plane balancing

**About Balancing**

- Single plane with trim and graphics
- Two plane with trim and graphics
- Static couple with graphics
- No phase (single plane - 4 runs) with graphics
- Grinding wheel - 2 or 3 weights with graphics

**About Tolerances**

- ISO and API standards
- ISO G1 for motor armatures
- ISO G2.5 for motor armatures (EASA)
- ISO Tolerances for narrow plane rotors



**NEW PRICE**

Part# BG

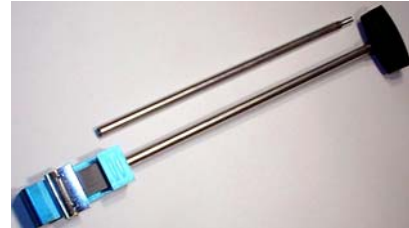
**595.00**

***BALANCING WEIGHT POCKET SCALE***

**Pocket Pro Balancing Weight Pocket Scale** – 400 g in .1 g increments;.1 g accuracy. Measures 4.75" X 3" X 1". 2 modes (grams and ounces), tare & memory functions, calibration weight. AA battery included.

**Part# PP 401****125.00*****BALANCING CLIP INSTALLATION AND REMOVAL TOOL***

**Large** – The tool head has an embedded magnet that holds the weight in place to facilitate installation and removal and eliminate loss of the weight. An extendable handle enables access into tight areas. Aluminum construction prevents sparking in flammable areas and keeps the magnet from attaching itself to metallic objects.

**Part# BCIT****59.95**

**Short** – The smaller tool head has a smaller magnet that holds the weights in place. This tool is appropriate for the BC-02 clips up to the BC-24, as well as the RIC-01 through the RIC-36. The tool has the same aluminum construction as the longer tool.

**Part# BCIT-Short****49.95*****PHASE ANGLE INDICATOR***

The PM-BAI Balancing Angle Indicator provides reverse 360 degree vector markings, is made of heavy duty metal construction and comes with a magnetic base for flat or curved surfaces.

**Part# PM-BAI****229.00**



## C D International, Inc.

5540 Shimerville Road Clarence, New York 14031  
 Tel: 716-741-8851 Fax: 716-741-0022 E-mail: [info@balancingweights.com](mailto:info@balancingweights.com)  
[www.balancingweights.com](http://www.balancingweights.com)



SHIM SETS				
Size	Mini Sets 10 each thickness		Complete Sets 20 each thickness	
	Part #	Price	Part #	Price
A	M-2A	139.00	F-2A	255.00
B	M-3B	185.00	F-3B	335.00
C	M-4C	240.00	F-4C	455.00
D	M-5D	375.00	F-5D	719.00

SHIM SIZE	DIMENSIONS	S L O T SIZE
AA	1 1/8" X 1 1/8"	3/8"
A	2" X 2"	5/8"
B	3" X 3"	3/4"
C	4" X 4"	1 1/4"
D	5" X 5"	1 5/8"

C D International Stainless Steel Alignment Shims are stamped with both the actual and nominal thickness ensuring an accurate and efficient alignment. The exact thickness of each shim within the package is the same. Our high quality (MIL-1-45208A) shims are made from durable, corrosion resistant 304 stainless steel.

Four machine foot sizes available in thirteen thicknesses PLUS a New AA size shim now available in seven thicknesses.

Note the new AA Shims are used on small fractional horsepower motors and do not have tabs on them. Fractional HP motors, although less expensive, need to be aligned properly since they are less able to withstand the forces of misalignment.

### Replacement Sets – 20 shims/pack

SIZE	AA		A		B		C		D	
	Part #	Price	Part #	Price	Part #	Price	Part#	Price	Part#	Price
Thickness										
.001"			A001	15.00	B001	18.00	C001	22.00	D001	32.00
.002"	AA002	11.75	A002	11.75	B002	17.50	C002	19.95	D002	29.95
.003"	AA003	11.75	A003	11.75	B003	17.50	C003	19.95	D003	29.95
.004"	AA004	11.75	A004	11.75	B004	17.50	C004	19.95	D004	29.95
.005"	AA005	11.75	A005	11.75	B005	17.50	C005	19.95	D005	29.95
.010"	AA010	14.50	A010	14.50	B010	19.50	C010	22.95	D010	31.95
.015"	AA015	16.90	A015	16.90	B015	21.90	C015	27.95	D015	31.95
.020"	AA020	18.25	A020	18.25	B020	21.90	C020	29.95	D020	37.95
.025"			A025	19.50	B025	21.90	C025	31.95	D025	42.95
.050"			A050	21.50	B050	26.50	C050	34.95	D050	57.95
.075"			A075	22.25	B075	32.90	C075	46.95	D075	77.95
.100"			A100	27.25	B100	35.50	C100	56.95	D100	105.95
.125"			A125	29.95	B125	43.20	C125	67.95	D125	119.95